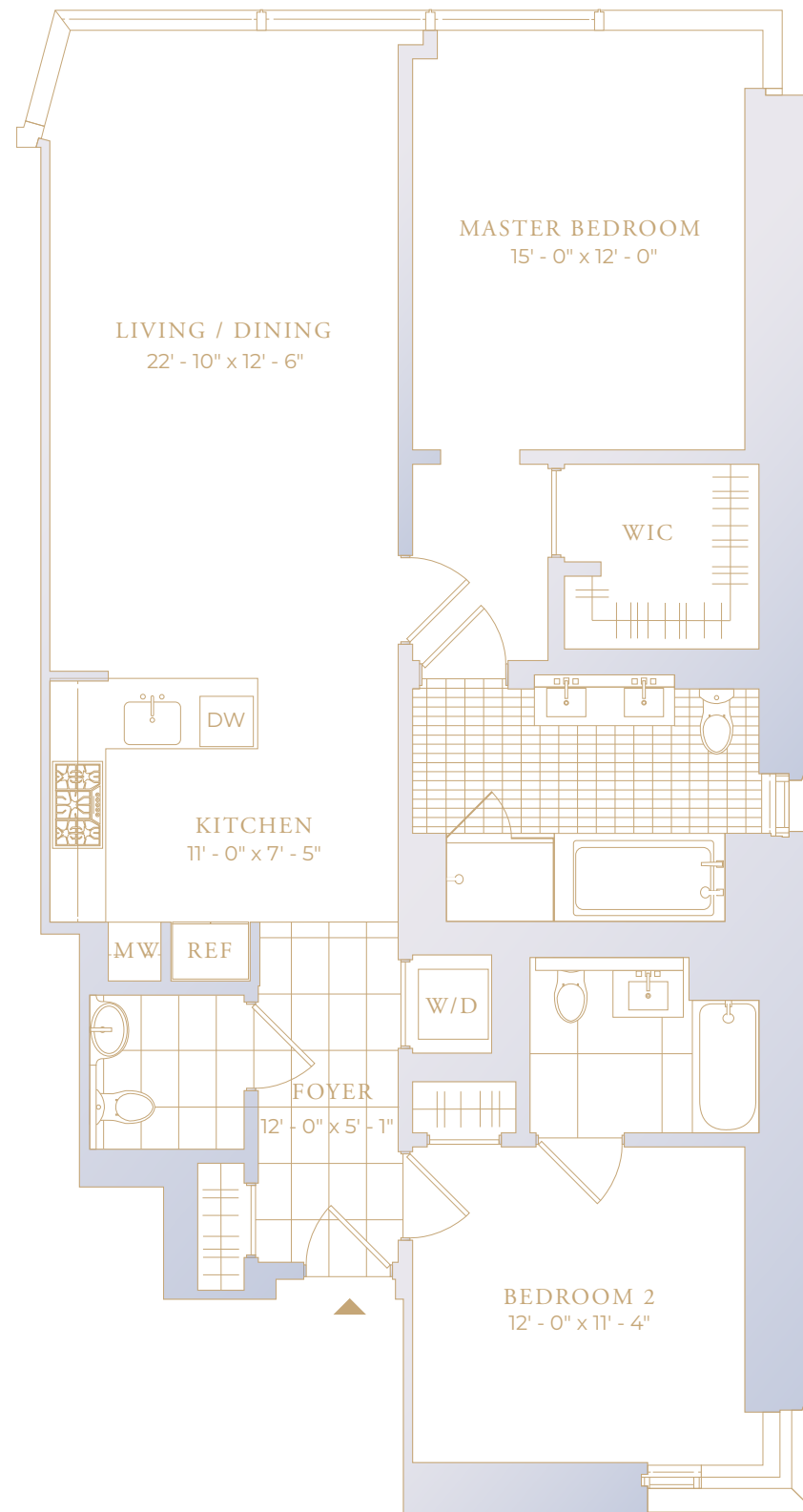
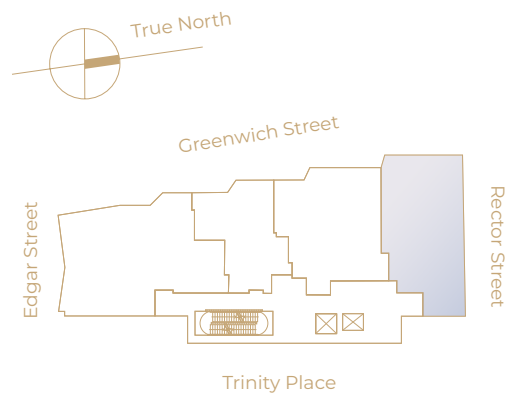




RESIDENCE 15D

2 Bedrooms
2 Bathrooms
Powder Room
1,371 Sq Ft



JOLIEONGREENWICH.COM / INFO@JOLIEONGREENWICH.COM / 646.480.7665

All dimensions shown are approximate and subject to construction variances within reasonable tolerances. Plans and dimensions may also contain minor variations from floor to floor. Sponsor reserves the right to make changes in accordance with the offering plan. Each unit should be inspected to determine its actual dimensions, layout and physical condition prior to closing. The complete offering terms are in an offering plan available from sponsor. File No. CD18-0179. Sponsor: TPHGreenwich Owner LLC, C/O Trinity Place Holdings, 340 Madison Avenue, New York, NY 10173. Exclusive Sales and Marketing by SERHANT.

