

COTTAGES & GARDENS

The Downtown Real Estate Market Continues to Soar at 77 Greenwich

By Serena Norr



PHOTOGRAPHY COURTESY OF TIM WILLIAMS PHOTOGRAPHY

The NYC real estate market continues to hit soaring heights, and downtown is no stranger to new developments swopping in and making splash in the market. Take [77 Greenwich](#), a swanky new skyscraper that features an ode to expert craftsmanship and natural materials, while also playing at its location by offering jaw-dropping views of the water.

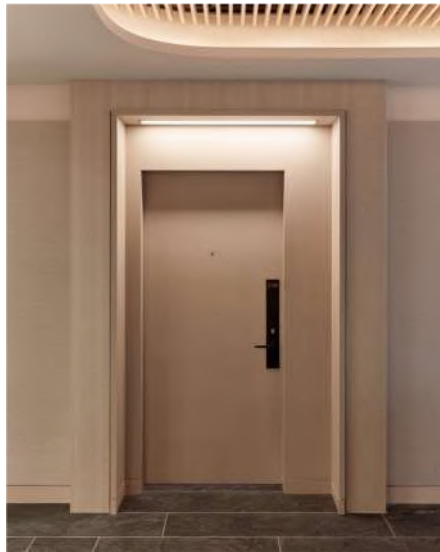
The vision for this luxury building was created by [Deborah Berke Partners](#), the New York-based architecture and interior design firm and [FXCollaborative](#) who worked on the architecture.

Topping out at 500 feet, new owners will discover a warm but modern ode to design that focuses on elevating the everyday. The rooms are filled with tons of amenities like custom Deborah Berke Partners-designed Poliform kitchens with state-of-the-art appliances from Miele, Sub-Zero and Wolf and marble countertops and backsplashes from Blue de Savoie. The rooms offer the best in luxury featuring Haisa marble floors, walls and counters, accented with quarter sawn sycamore millwork, and radiant heated floors. And of course you can't forget the bathrooms where new residents will find Venice terrazzo tile floors and quarter sawn oak millwork cabinets as well as custom-carved and polished Calacatta Lincoln sink bowls and backsplash panels enhanced by sandblasted and brushed Bianco Mist quartzite floors.

[77 Greenwich](#) currently has 90 units, ranging from one-bedroom to four-bedrooms, from \$1.5M to \$5.8M.



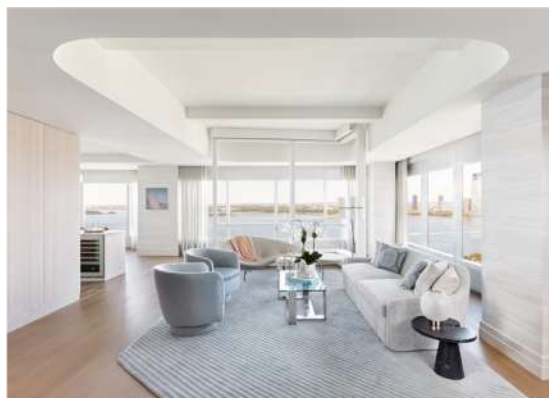
PHOTOGRAPHY COURTESY OF TIM WILLIAMS PHOTOGRAPHY



PHOTOGRAPHY COURTESY OF TIM WILLIAMS
PHOTOGRAPHY



PHOTOGRAPHY COURTESY OF TIM WILLIAMS
PHOTOGRAPHY



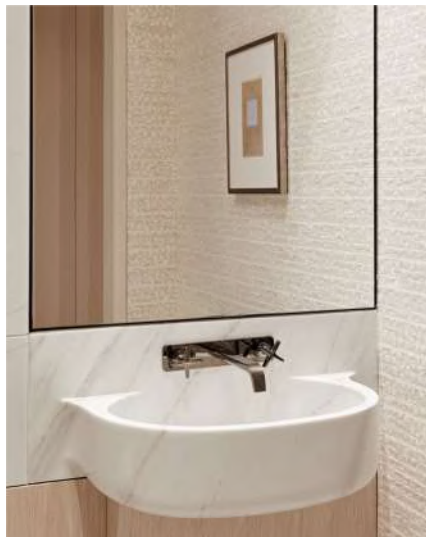
PHOTOGRAPHY COURTESY OF TIM WILLIAMS
PHOTOGRAPHY



PHOTOGRAPHY COURTESY OF TIM WILLIAMS PHOTOGRAPHY



PHOTOGRAPHY COURTESY OF TIM WILLIAMS PHOTOGRAPHY



PHOTOGRAPHY COURTESY OF TIM WILLIAMS PHOTOGRAPHY